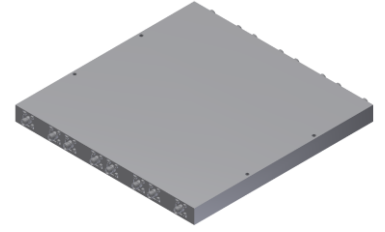


8*8巴特勒矩阵

型号 - SA-07-8B024073 Rev.A

2.4-7.25GHz 8*8巴特勒矩阵; 同轴连接器封装



本技术规格书内容变化恕不另行通知

机电性能

工作频段	GHz	2.4-2.5	5.18-5.83	5.9-7.25
VSWR	:1 (Typ./Max.)	1.2/1.5	1.3/1.5	1.3/1.55
插入损耗 ¹	dB(Typ./Max.)	9.8/11.2	10.6/11.6	10.8/11.8
幅度平衡	dB(Typ./Max.)	±0.3/±0.6	±0.4/±0.8	±0.5/±0.9
幅度平坦度	dB(Typ./Max.)	±0.2/±0.4	±0.3/±0.5	±0.4/±0.7
相位精度	Deg. (Typ./Max.)	±6/±8	±7/±10	±8/±12
隔离度	dB(Typ./Min.)	18/13	17/12	15/12

功率² W(Max.) 额定(CW): 5; 峰值(Peak): 500;

重量 g(Max.) 1380 外形尺寸³ mm 205.7x205.7x16.5 (L×W×H)

封装类型 不锈钢同轴接头; 输入端: SMA 阴头 [F], 输出端: SMA 阴头 [F]

表面处理 镀镍; 符合ISO 4527相关标准

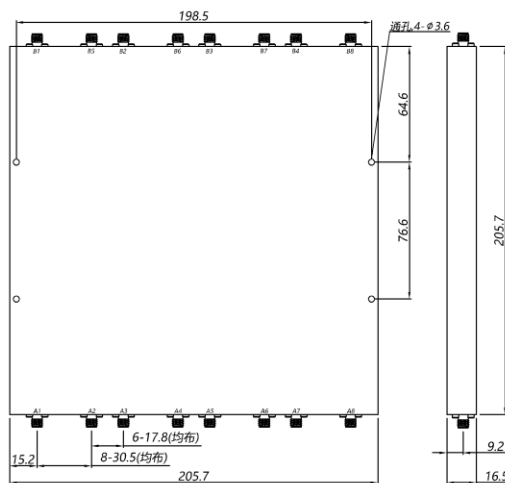
温度指标 工作: -40~+70°C, 储存: -55~+85°C; 符合SJ 20527A-2003 3.12.1标准c及3.12.2标准c

环境指标 可满足国军标 (GJB150) 相关温度循环、振动、冲击等标准 (可选项, 详细信息请联系厂商了解)

定制要求 N/A

- 注释 1. 包含理论插损9dB 2. 额定功率基于单个输入端
3. 除非特别标注, 默认公差: x.±1; .x±0.5; .xx±0.1

2D外形图

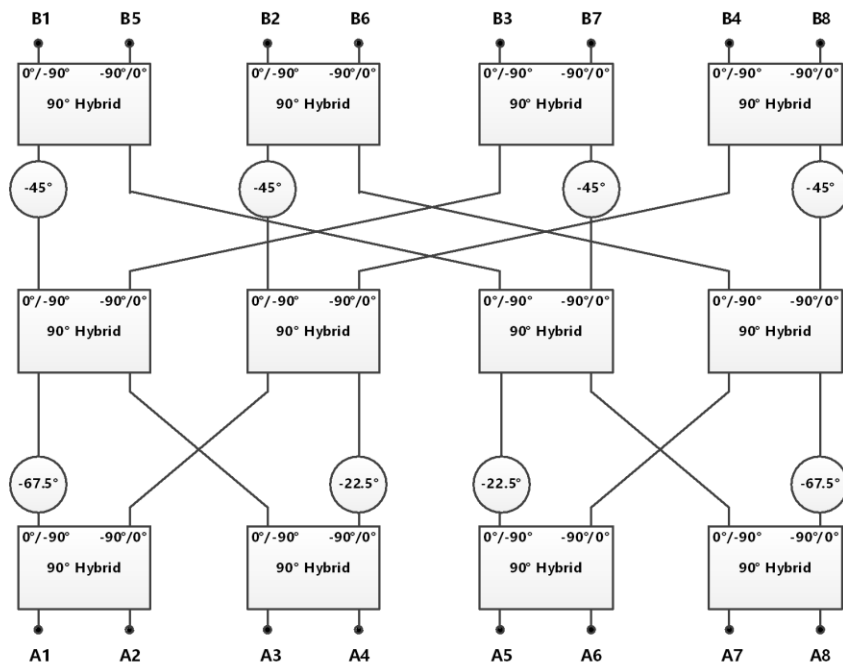


8*8巴特勒矩阵

型号 - SA-07-8B024073 Rev.A

2.4-7.25GHz 8*8巴特勒矩阵; 同轴连接器封装

拓扑图



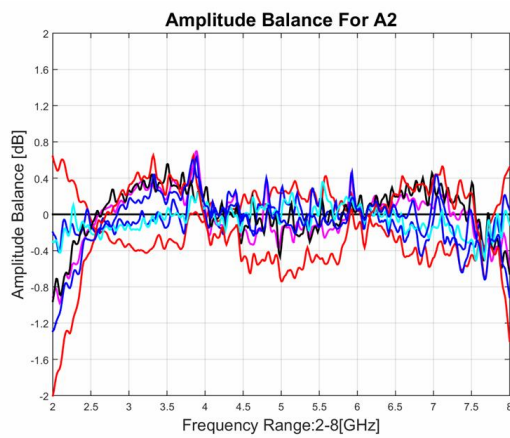
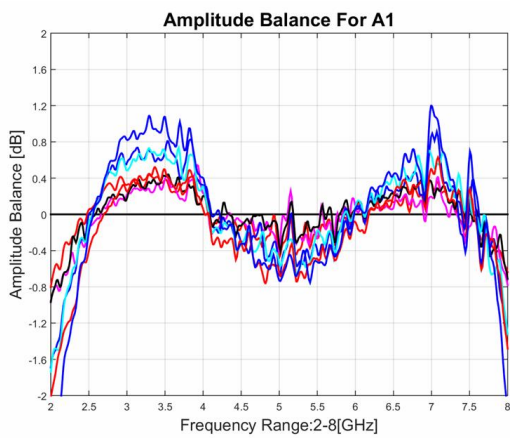
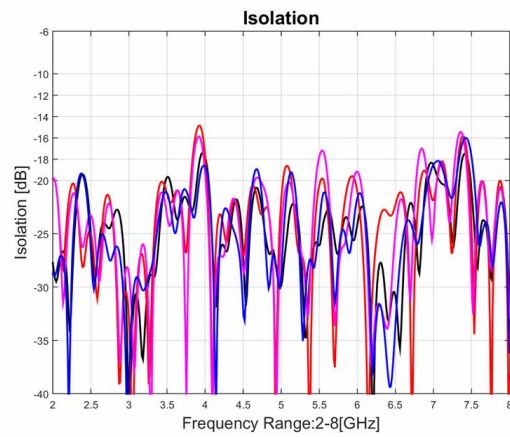
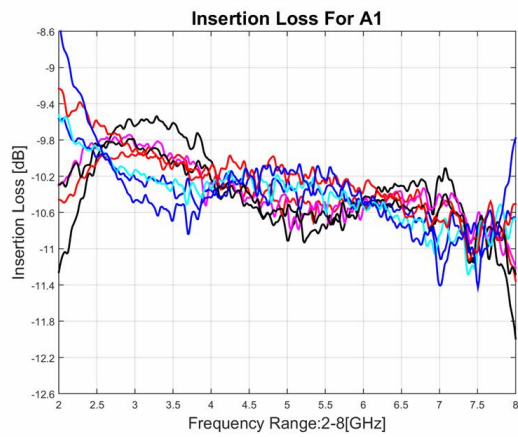
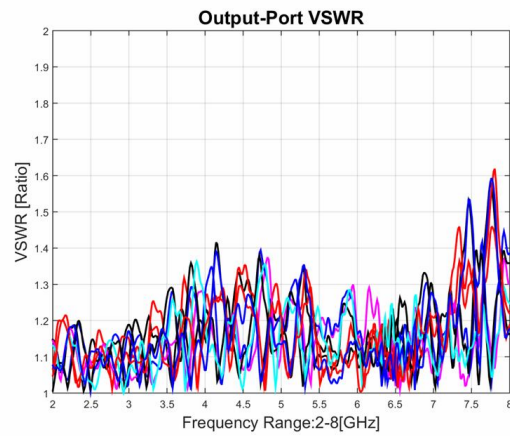
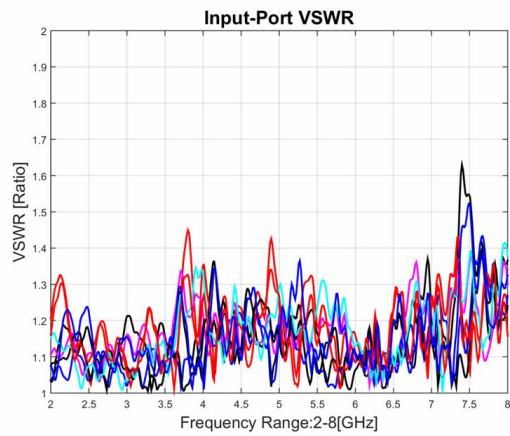
I/O 相位矩阵

Input Output	A1	A2	A3	A4	A5	A6	A7	A8
B1	-112.5	-202.5	-135	-225	-112.5	-202.5	-180	-270
B2	-135	-45	-247.5	-157.5	-180	-90	-337.5	-247.5
B3	-157.5	-247.5	0	-90	-247.5	-337.5	-135	-225
B4	-180	-90	-112.5	-22.5	-315	-225	-292.5	-202.5
B5	-202.5	-292.5	-225	-315	-22.5	-112.5	-90	-180
B6	-225	-135	-337.5	-247.5	-90	0	-247.5	-157.5
B7	-247.5	-337.5	-90	-180	-157.5	-247.5	-45	-135
B8	-270	-180	-202.5	-112.5	-225	-135	-202.5	-112.5

8*8巴特勒矩阵

型号 - SA-07-8B024073 Rev.A

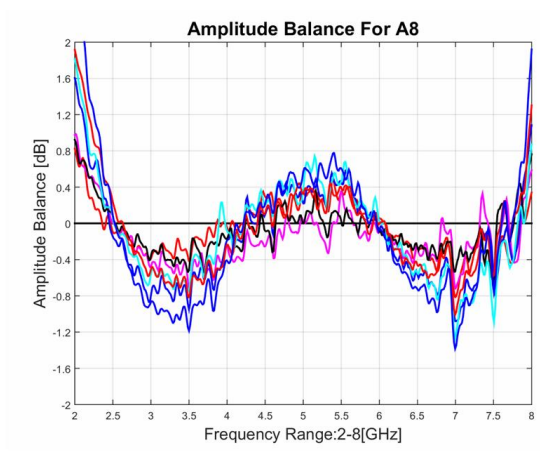
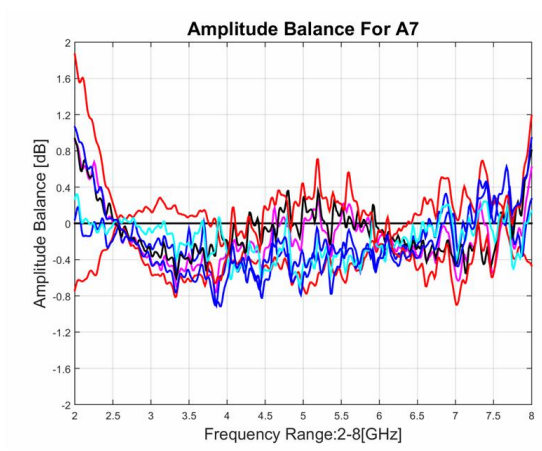
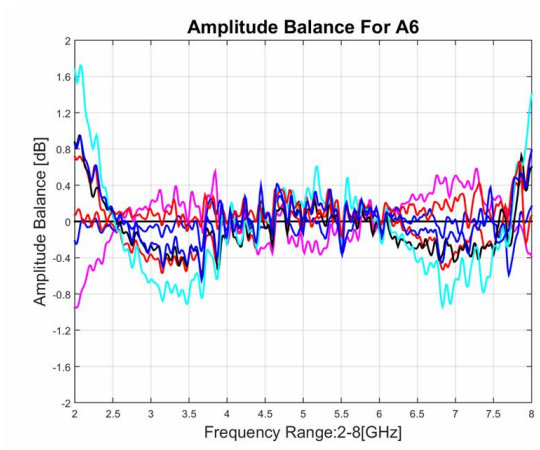
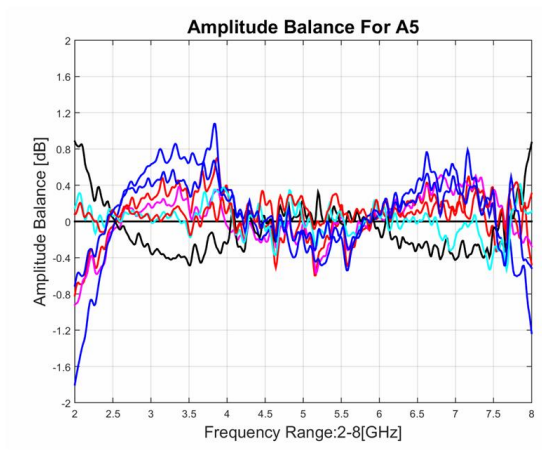
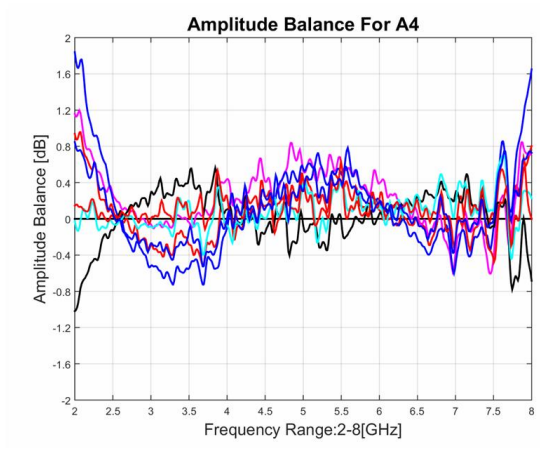
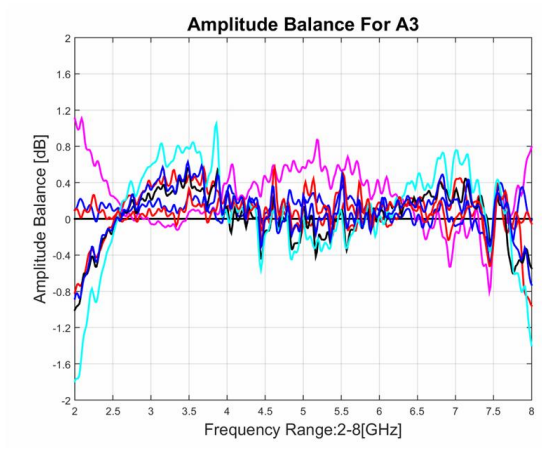
2.4-7.25GHz 8*8巴特勒矩阵; 同轴连接器封装



8*8巴特勒矩阵

型号 - SA-07-8B024073 Rev.A

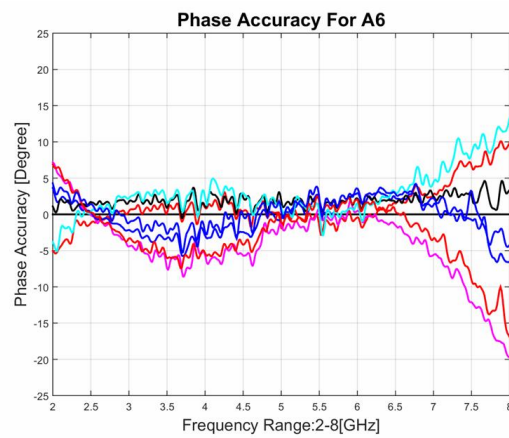
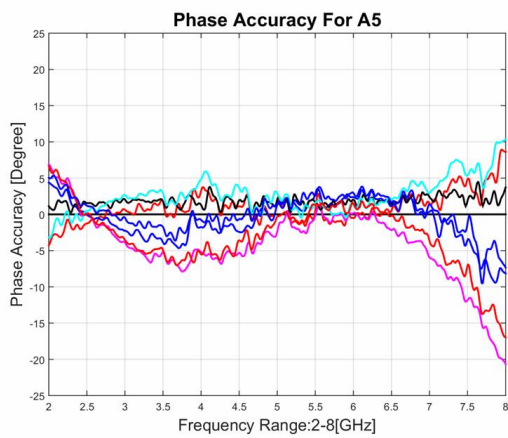
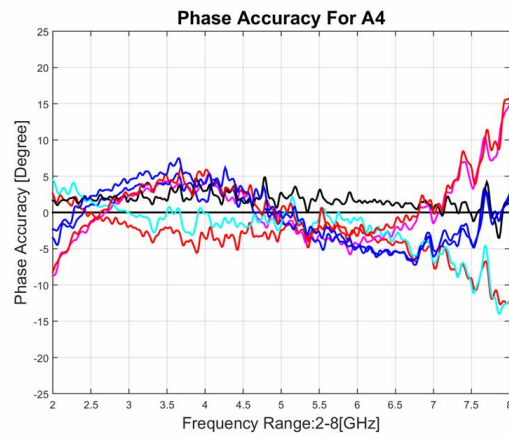
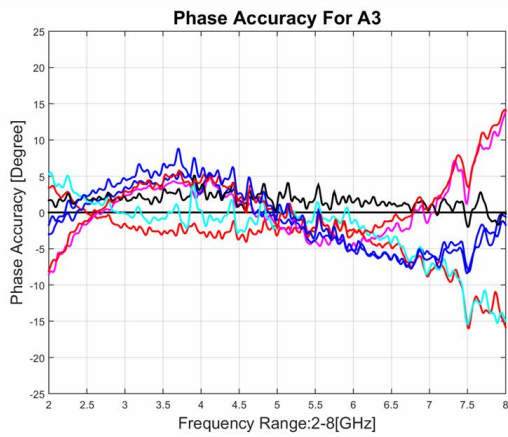
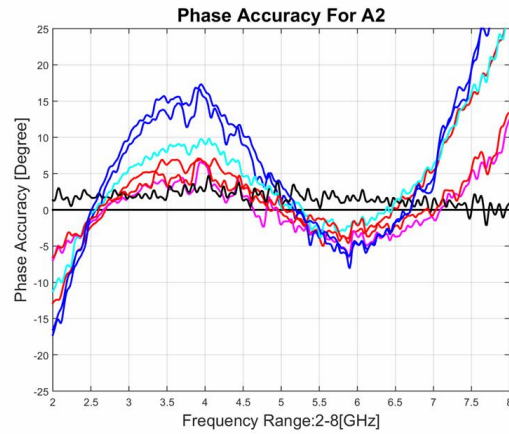
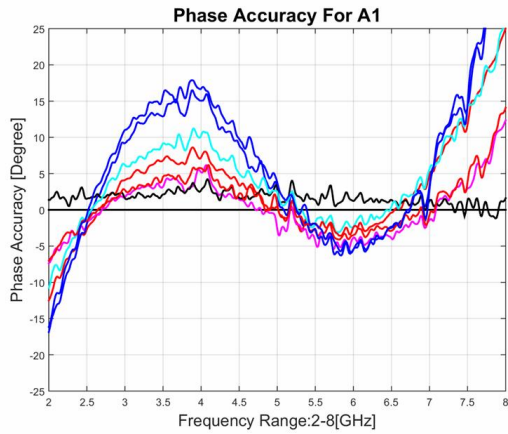
2.4-7.25GHz 8*8巴特勒矩阵; 同轴连接器封装



8*8巴特勒矩阵

型号 - SA-07-8B024073 Rev.A

2.4-7.25GHz 8*8巴特勒矩阵; 同轴连接器封装



8*8巴特勒矩阵

型号 - SA-07-8B024073 Rev.A

2.4-7.25GHz 8*8巴特勒矩阵; 同轴连接器封装

